

ADDITIONAL DUTIES FOR WORKER EMPLOYERS

Notice for Applications

Orally warn workers **and** post treated areas if required by the product label. If not required by the product label warning signs must be posted if the REI is **greater than**:

- ◆ 48 hours for outdoor production, or
- ◆ 4 hours for enclosed space production (p42)

Posted Warning Signs

Post legible WPS-approved warning signs no more than 24 hours prior to an application; keep posted during REI; remove/cover within 3 days after REI expires.

Signs must be posted visibly from all reasonable expected entrances to the treated area.

(p44-47)



Verbal Warnings

Before each application, tell workers on the establishment (in a manner they can understand):

- ◆ location & description of treated area
- ◆ date & times entry is restricted
- ◆ application exclusion zone, REI, and not to enter during REI

(p43-44)

ADDITIONAL DUTIES FOR HANDLER EMPLOYERS

Personal Protective Equipment Handlers Must Use

Provide handlers with all PPE required by the pesticide labeling, and be sure it is:

- ◆ clean and in operating condition
- ◆ worn, used, and cleaned according to manufacturer's instructions
- ◆ cleaned, inspected, and repaired or replaced before each use

(p62-64)

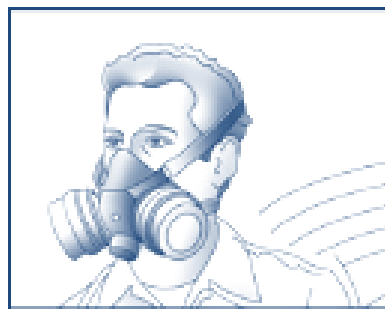
Respirators

When a respirator is required by product labeling, employers must provide handlers with:

- ◆ a **medical evaluation** to ensure handler is physically able to safely wear the respirator
- ◆ **training in respirator use**
- ◆ a **fit test** to ensure the respirator fits properly

Records of these items must be kept on the establishment for 2 years.

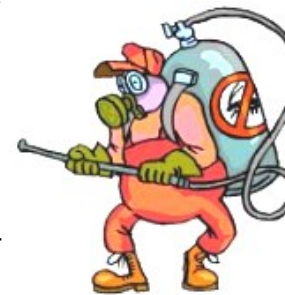
(p68-73)



Cleaning and Disposal of PPE

Employers must ensure:

- ◆ PPE is washed and dried,
- ◆ stored separately from personal clothing, and
- ◆ away from pesticide-contaminated areas.



Handler employers must also:

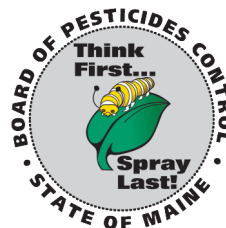
- ◆ provide handlers with a **pesticide-free area** for:
 - storing personal clothing not in use
 - putting on PPE at start of task
 - taking off PPE at end of task
- ◆ take steps to **avoid heat-related illness** when labeling requires PPE for a handler activity
- ◆ not allow used PPE to be taken home

(p62-64)

For a complete explanation of WPS requirements please contact us or visit our website for links to additional WPS training resources.

thinkfirstspraylast.org

Maine Board of Pesticides Control



pesticides@maine.gov
Tel. 207-287-2731
28 State House Station,
Augusta, ME 04333-0028

Worker Protection Standard

DUTIES OF EMPLOYERS

The Worker Protection Standard (WPS) is a federal regulation issued by the Environmental Protection Agency (EPA). The purpose of the WPS is to protect agricultural workers and pesticide handlers on farms, forests, nurseries, and greenhouses from occupational pesticide exposure.

This brochure explains many of your responsibilities as an employer under the WPS. Throughout are page numbers referencing where to find additional content in the EPA's **How To Comply Manual**, which can be found on the BPC website:

thinkfirstspraylast.org

WPS covers:

- ◆ **pesticide handlers**—mix, load, or apply agricultural pesticides; clean or repair application equipment; act as flaggers, etc.
- ◆ **agricultural workers**—perform all other tasks involved in the production of agricultural plants.

Employers are responsible for ensuring that workers and handlers receive all protections required by the pesticide labeling and the WPS.

(p4)

Pesticide Safety Training



Worker and handler training must be conducted annually.

- ◆ Workers must be trained **before** performing tasks in an area which has had an REI in effect in the last 30 days. Handlers must be trained before performing any handler activity.
- ◆ Training must be performed with EPA-approved materials, which may be presented orally from written materials, or audio-visually.
- ◆ Trainers must:
 - be certified applicators,
 - have completed an EPA-approved train-the-trainer program, or
 - be designated by the State or Tribal pesticide enforcement agency.
- ◆ Training must be delivered in a manner the employees can understand, and the trainer must be present for the duration and able to respond to questions.
- ◆ All training records must be maintained on the establishment for 2 years from the training date.
- ◆ Employers must tell all workers and handlers where to find application information, SDS forms, EPA safety poster, and decontamination supplies.

(p27-29)

Some WPS protections that employers must provide are nearly the same for both workers and handlers.



Information Display Requirements

Information must be displayed in an easily accessible location that employees have unrestricted access to. Application info and SDS **must be displayed for 30 days after the REI expires**, and then kept in records for 2 years after REI expires. Information must include:

- ◆ **Facts about each pesticide application**- product name, EPA registration number, active ingredient, crop/site treated, location and description of treated area, date, start and end times of application, duration of restricted entry interval (REI).
- ◆ **Safety data sheets** (SDS) for each WPS-labeled pesticide applied
- ◆ **EPA WPS safety poster**, or equivalent info must be displayed at all permanent decontamination sites or where decontamination supplies are provided for 11 or more workers. (p21-23)

Employers must **provide application information and SDS** to a worker, handler, designated representative, or medical personnel, **within 15 days of their request.** (p25)

Information Exchange

Before making any pesticide application, contracted commercial pesticide handler employers must make sure the owner/operator of the agricultural establishment is aware of:

- ◆ location/description of area to be treated
- ◆ date and estimated start time and end time of the application
- ◆ product name, EPA registration number, active ingredient, and REI
- ◆ whether the product label requires both oral warnings and posting of treated area
- ◆ all other safety requirements on labeling (p31-32)

Owners/operators of agricultural establishments must ensure that commercial pesticide handler employers they hire are aware of:

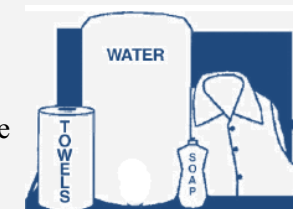
- ◆ location/description of any treated areas where an REI is in effect that the commercial handler may come within 1/4 mile of, and
- ◆ restrictions on entering those areas. (p31-32)

Minimum Age Requirements

Employers are responsible for ensuring **ALL** handlers and early-entry workers are at least 18 years old. (p49)

Decontamination Supplies

Provide accessible decontamination supplies located together within 1/4 mile of handlers and most workers:



- ◆ 1 gallon of water per worker and 3 gallons of water per handler at start of each work period.
- ◆ Plenty of soap and single use towels. Hand sanitizers and wet towelettes are **not** sufficient.
- ◆ A clean coverall or change of clothes for handlers.

(p26 &74)

Emergency Assistance

If a worker/handler may have been exposed to pesticides during or within 72 hours of employment, and needs emergency medical treatment, employers must:

- ◆ promptly make transportation available to an appropriate medical facility;
- ◆ promptly provide treating medical personnel with information about all pesticide products the employee may have been exposed to, including:
 - SDS, product name, EPA registration number, active ingredient,
 - description of how pesticide was used
 - circumstances that could have resulted

in exposure to pesticides.

(p26)

